

# The Beaver Lake Watershed Partnership invites you to the first "State of the Watershed" meeting

## What happens at the "State of the Watershed" meeting?

Participants learn about the watershed (your own backyard!) and the Partnership's work on the *Watershed Management Plan*, which includes parts of Auburn, Chester, and Derry. If you live here, you should be there!

## Who will be there?

Your friends, family, neighbors, and others interested in the Beaver Lake Watershed.

## Why should I be there?

Because you are concerned about the future of your watershed, your quality of life, your drinking water, and your streams and ponds.

## Where do I get the *Plan* and what if I have questions?

Visit [BLWP.net](http://BLWP.net) or contact the Partnership at 796.2615 or [mlt@BLWP.net](mailto:mlt@BLWP.net).

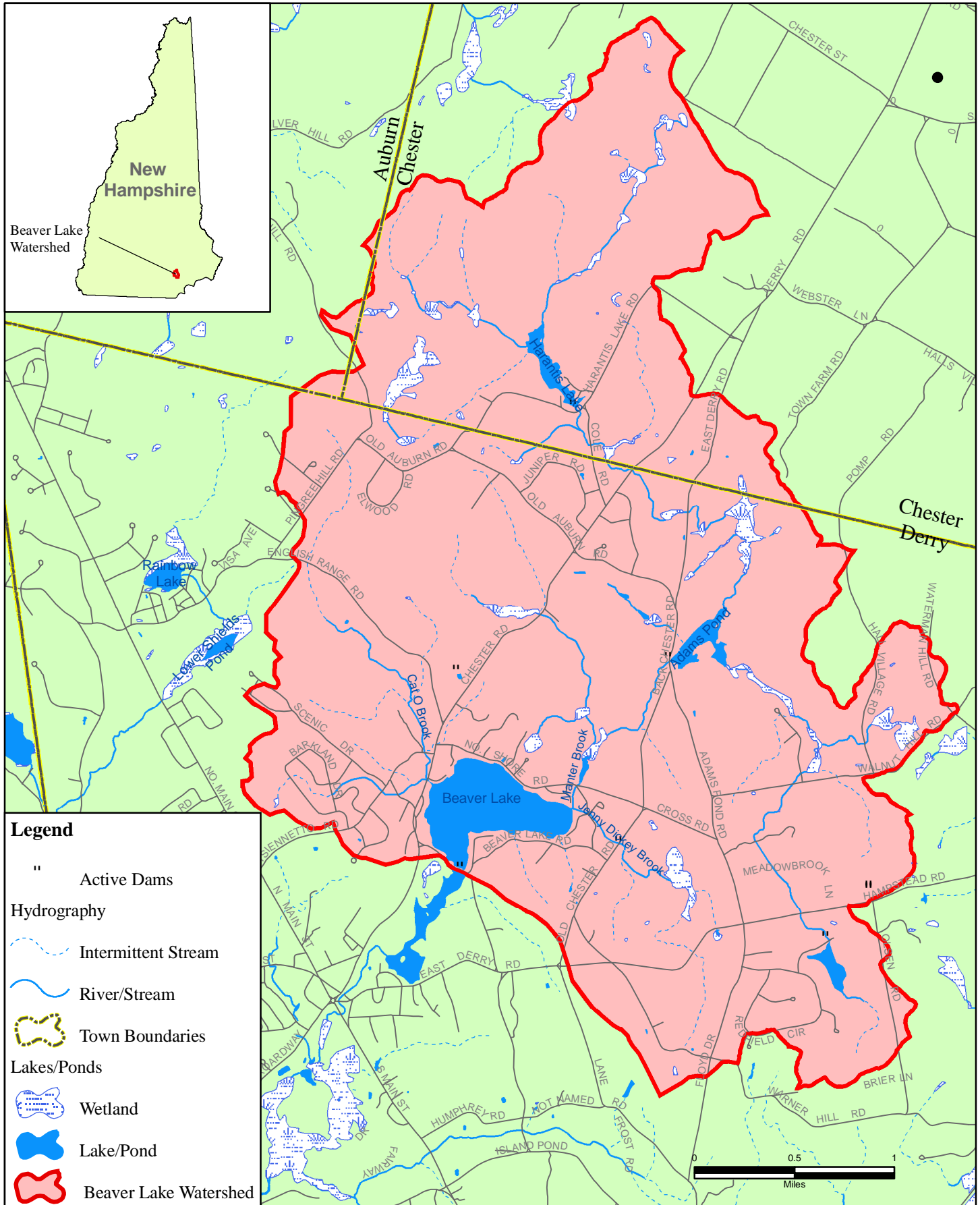
## Directions to Pinkerton Academy

From 93 South/North to exit 4 (Route 102). End of exit ramp head east. Go through 2 sets of lights. After second set of lights follow for approx. 1 mile through downtown (Hoodcroft Golf Course will be on right). When you come to the rotary, go around the rotary and take the 4<sup>th</sup> turn off the rotary (making a nearly complete circle). This is NH Route 28 Bypass heading north. Go straight up the hill. Pinkerton Academy (and the Ek Science Building) is the 3<sup>rd</sup> turn on the left.

Tuesday,  
August 28, 2007  
Pinkerton  
Academy,  
Derry, NH  
Ek Science  
Building  
at 7:00 PM.



Figure 3.1-1. Beaver Lake Watershed: Location Map.



Map prepared by Gomez and Sullivan Engineers, P.C. using watershed, dam, and GIS annotation layers from NHDES and remaining GIS layers from NH GRANIT. "Digital data in NH GRANIT represent the efforts of the contributing agencies to record information from the cited source materials. Complex Systems Research Center (CSRC), under contract to the Office of Energy and Planning (OEP), and in consultation with cooperating agencies, maintains a continuing program to identify and correct errors in these data. OEP, CSRC, and the cooperating agencies make no claim as to the validity or reliability or to any implied uses of these data."