

## Here are some easy things you can do today to help your watershed

- Test your soil before you fertilize—you may find that you need a lot less than you think. Consider lower impact and slow-release fertilizers including lime and wood ash (a great way to recycle!)
- If you are not on the sewer system, have your septic tank pumped and your system inspected every three years
- Use less water by replacing showerheads, toilets, and faucets with low flow equipment
- Consider non-toxic alternatives to yard and home care products such as de-icers, cleansers, and paint
- Volunteer for your town's conservation commission, zoning board of adjustment, open space committee, or planning board—and for the Beaver Lake Watershed Partnership!



Visit your Partnership at [BLWP.net](http://BLWP.net)

Beaver Lake Watershed Partnership  
PO Box 133  
East Derry NH 03041

# *The* **Beaver Lake Watershed of Auburn, Chester, and Derry**

**Get involved  
in your  
community!**



## Where's the Beaver Lake Watershed?

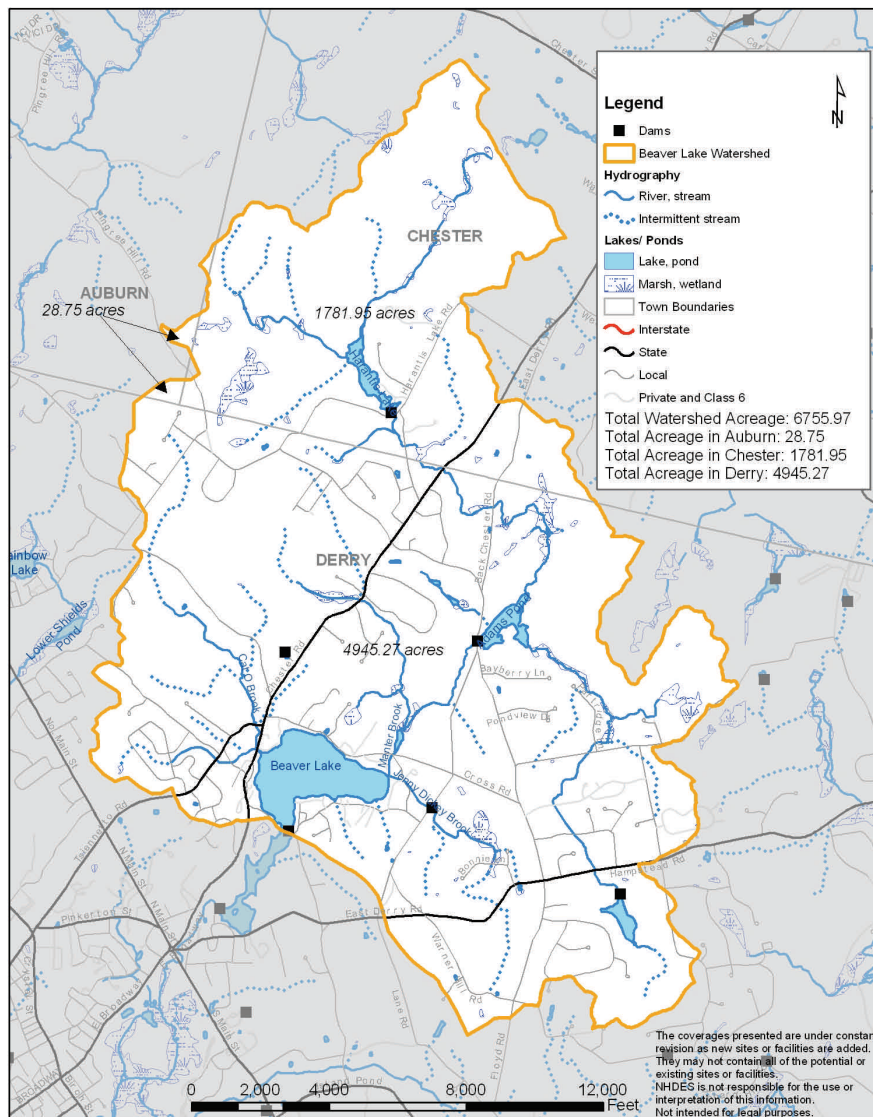
Parts of Auburn, Chester, and Derry comprise the Beaver Lake Watershed (see map below). This area includes not only Beaver Lake in East Derry but Harantis Lake in Chester and Adams Pond in Derry.

## What's the Beaver Lake Watershed Partnership?

The Partnership's members include town officials, lake and watershed groups, schools, planning commissions, and individuals like you who have joined together to help improve watershed health.

## Why a Plan?

When streams flow, they don't know that they have crossed a town line. The Partnership and the Plan provide a forum for local officials, watershed groups, schools, and concerned citizens so that they can work together to make positive changes.



## What's in the Watershed Management Plan?

Your Plan focuses on five key watershed areas:

- Open Space, Land Use, and Growth Management
- Water Quantity
- Water Quality
- Biological and Habitat
- Recreation

The goals, objectives, and activities in the Plan provide everyone with a focus to help shape local land use ordinances and helpful information to make changes in our homes, yards, and businesses that help improve watershed health for everyone.

## What's next? How can I get involved?

The really fun part begins now where we work together to implement all of the great recommendations and projects in the Plan. Just a few of the many examples include:

- Conducting field work and surveys with the Stream Teams (Pinkerton Academy students and other volunteers);
- Working with town officials to implement zoning changes and create innovative programs;
- Creating outreach tools including brochures, fact sheets, and "door hangers;" and
- Speaking to community and civic groups on watershed management and inviting the BLWP to present at your next event.

**Find out more about other activities and sign up at [BLWP.net](http://BLWP.net)**